

TRAVELOGUES FROM REMOTE LANDS

November 2017

“Dozen Dream Destinations for 2018”



WRITTEN BY
Catherine Hould
PUBLISHED ON
November 6, 2017
LOCATION
Rajasthan, India

Halfway between Jodhpur and Udaipur in the Indian State of Rajasthan, there is a camp where luxury meets leopard. Suján Jawai, an offbeat safari camp in the wilds of northwest India. Having seen films here since Suján Jawai opened in 2014, I finally had the chance to experience the camp for myself. It did not disappoint.



Found as I am of luxury boutique properties in remote locations, Jawai makes for a perfect stop on the charming seven-hour drive between Jodhpur and Udaipur. Jawai is a unique experience – wildlife and rural village and natural accommodations – in between two cities full of exquisite palaces and temples. We at Remote Lands feature diverse itineraries, interspersing cities with countryside, grand architecture with wildlife, urban beef steaks with luxury tents.



Credit: Hould

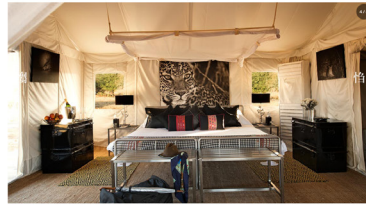


Approaching Jawai after a full day drive from Ahmedabad in Gujarat, the ride switched from SUV to an open air safari jeep for the final 15 minutes down to the camp over bumpy paths and dusty terrain. I was greeted with a glass of Suján signature pink champagne by the wonderful Pravek and Megha and Yusuf who own the camp. My Royal Tent was lit with hundreds of candles and a magnificent feast had been prepared by my personal chef. As every meal consists here a choice of Indian or Western cuisine, both are divine.



ABOVE: The hills of Jawai.

The most well-known Jawai experience is spotting leopard living in trees in the dramatic mountains and rock formations surrounding the area. With a geographical legacy stretching back 850 million years, the landscape is dramatic, dotted with granite hills and boulders, and is crisscrossed by rich green fields, acacia forest, and patches of light forest – your own private wilderness.



ABOVE: Accommodations at the Royal Tented Suite. (Credit: Suján)

While the mighty leopard are the main attraction, the area also features hyenas, crocodiles, and a number of small mammals. Blackbills will feed near the 250 species of birds in the area, including flamingos and storks as well as resident raptors and bee-eaters.



ABOVE: Selected images of the Rajasthani people. (Credit: Suján)

However, Jawai is also a cultural destination. The main activity at Jawai is exploring the countryside and nearby villages by open air jeep. I was fascinated to learn about the local Rajasthani people and their symbiotic relation with the leopards, which they refer to as galleys. When their camps are empty by leopards they use it as a sanctuary for the galleys. Here in Jawai, the local people respect the leopards and would never harm them, which is unfortunately not always the case with tigers. The leopards here thrive even though the area is a national park, unlike Ranthambore or Kanha where the many rules protect the tigers.



ABOVE: Leopards on a Suján Jawai safari. (Credit: Suján)

Because Jawai is not a national park, it is not bound by strict rules such as fixed times and four passengers in a jeep. Travelers can leave and return whenever they wish. I had my own personal manager named Vidant who drove me around and explained the wilderness, including the facts that one of the females had recently had cubs, so we drove to spot her.



ABOVE: Locals riding a jeep.

We received a call on the radio that she was in fact on the other side of the mountain, so we drove quickly over to see her. She was clearly sitting on a rock on the mountainside, and with the help of a team here we were able to snap a few photos. Besides the jeep safari, I was able to explore the area on foot. Bicycling is also available.



ABOVE: In a jeep with Vidant, my personal manager.

The Spa Tent is excellent and I indulged in a massage and a much needed manicure and pedicure. There is a lovely swimming pool area, and relaxation on the terrace between the morning and evening safaris is highly recommended.

Jawai has only 11 tents and over 50 staff, so the service is phenomenal. You have your own helper whom you call by giving a button in your tent, because there are no phones (no TV). The staff quickly learn your likes and dislikes, from your drinks to your food preferences. I was running every morning, and they supplied me with a running partner – one of the rangers named Will from the UK – and a jeep loaded with cold water and towels just in case we wanted to had early.



ABOVE: Locals pass by on a Jawai safari.

Jawai Leopard Camp is an extremely special place, not only because of the picturesque scenery, the remote location, and the leopards, but mostly because of the people – the management, the staff, and the friendly locals.

Much like the luxury Jaisalmer where this luxury boutique property derives its name, Suján Jawai is seasonal, open to guests from September 25 to April 30. The property includes eight luxury tents, one Family Tented Suite for groups of four, and the Royal Tented Suite. Travelers should also remember to visit the Suján safari property Rajasthan Palace in Jaipur, which is specially designed for its inquisitive, urban palace stay.



TRAVELOGUES FROM REMOTE LANDS

November 2017



Remote Lands has announced their 2018 emerging Asian destinations. Sunday, 12th November 2017

Source: Remote Lands

The list, coined the 'Dozen Dream Destinations,' is curated by the team's well-traveled experts and is comprised of a selection of Asia's more remote, hidden gem destinations that are currently experiencing growth and development with the arrival of new resorts, cultural experiences, new direct flights, and more.

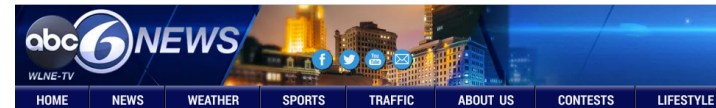
"Our discerning and well-traveled clientele are always looking for new places and experiences, and each year our team of travel experts scour the continent to offer these travelers new and exciting destinations that they may have otherwise overlooked," says Catherine Heald, Remote Lands co-founder and CEO.



"We curated our Dozen Dream Destinations for 2018 to include destinations that are largely undiscovered as well as those that are on the rise or are currently experiencing major development. Our personalized itineraries highlight the best of each destination and provide unique experiences and exclusive access beyond what would be available for the standard traveler."

Sujan Jawai Camp

Located between Jodhpur and Udaipur in India, Sujan Jawai provides a unique experience for visitors – leopards and other wildlife, rural villages and tented accommodations – in between two bustling cities full of exquisite palaces and temples. The highlight of Jawai is exploring the countryside and nearby villages by open air jeep to spot the leopards that live in caves in the dramatic mountains and rock formations surrounding the camp. Jawai is also a cultural destination and visitors can learn about the local Rabari people and their symbiotic relationship with the leopards, which they revere as godlike. Because Jawai is not a national park, they are not bound by the same strict regulations of other parks so visitors are able to go out and return at whatever time they like with their own personal ranger. Jawai has just 11 tents and over 50 staff and each guest has their own butler. Jawai also offer a luxury spa and a swimming pool. Remote Lands organizes a diverse Classic India itinerary with Sujan Jawai Camp as a key highlight, interspersing cities with countryside, grand architecture with wildlife and city hotel rooms with luxury tents.



Remote Lands Announces 2018 Emerging Asian Destinations

Posted: Nov 06, 2017 9:06 PM IST

Luxury Asia Travel Designer's Dozen Dream Destinations Educate Travelers on Where to Go in Asia in 2018

Bangkok (PRWEB) November 06, 2017

Remote Lands, the world's leading ultra-luxe Asia travel designer, has announced their 2018 emerging Asian destinations, offering valuable insight on where their high-end clientele should consider traveling in the coming year. The list, coined the "Dozen Dream Destinations," is curated by the team's well-traveled experts and is comprised of a selection of Asia's more remote, hidden gem destinations that are currently experiencing growth and development with the arrival of new resorts, cultural experiences, new direct flights, and more.

"Our discerning and well-traveled clientele are always looking for new places and experiences, and each year our team of travel experts scour the continent to offer these travelers new and exciting destinations that they may have otherwise overlooked," says Catherine Heald, Remote Lands co-founder and CEO. "We curated our Dozen Dream Destinations for 2018 to include destinations that are largely undiscovered as well as those that are on the rise or are currently experiencing major development. Our personalized itineraries highlight the best of each destination and provide unique experiences and exclusive access beyond what would be available for the standard traveler."

View the full destinations list below and for more information, visit remotelands.com.

Sujan Jawai Camp

Located between Jodhpur and Udaipur in India, Sujan Jawai provides a unique experience for visitors – leopards and other wildlife, rural villages and tented accommodations – in between two bustling cities full of exquisite palaces and temples. The highlight of Jawai is exploring the countryside and nearby villages by open air jeep to spot the leopards that live in caves in the dramatic mountains and rock formations surrounding the camp. Jawai is also a cultural destination and visitors can learn about the local Rabari people and their symbiotic relationship with the leopards, which they revere as godlike. Because Jawai is not a national park, they are not bound by the same strict regulations of other parks so visitors are able to go out and return at whatever time they like with their own personal ranger. Jawai has just 11 tents and over 50 staff and each guest has their own butler. Jawai also offer a luxury spa and a swimming pool. Remote Lands organizes a diverse Classic India itinerary with Sujan Jawai Camp as a key highlight, interspersing cities with countryside, grand architecture with wildlife and city hotel rooms with luxury tents.

The screenshot shows the CISION PRWeb website interface. At the top, there is a navigation bar with 'HOME', 'NEWS CENTER', and 'BLOG'. A secondary navigation bar lists various categories like 'FRONT PAGE', 'ARTS', 'BUSINESS', etc. The main content area features the article title 'Remote Lands Announces 2018 Emerging Asian Destinations' with a 'Share Article' button and social media icons. Below the title, the article text is displayed, including the date 'BANGKOK (PRWEB) NOVEMBER 06, 2017' and the introductory paragraph about Remote Lands' announcement.